

# Comparing FreeSurfer and FIRST

Winkler AM, Blangero J, Glahn DC  
GOBS

## Volume measurements (mm<sup>3</sup>)

		<b>L_Hipp</b>	<b>R_Hipp</b>
<b>FreeSurfer</b>	<i>AVERAGE</i>	4072.8	4193.33
	<i>STD DEV</i>	447.2	470.21
<b>FIRST def</b>	<i>AVERAGE</i>	3415.65	3552.6
	<i>STD DEV</i>	444.14	468.39
<b>FIRST fcd</b>	<i>AVERAGE</i>	3495.83	3697.4
	<i>STD DEV</i>	404.04	440.09
<b>FIRST flirtmask</b>	<i>AVERAGE</i>	3502.04	3638.49
	<i>STD DEV</i>	433.86	457.02

## Correlations

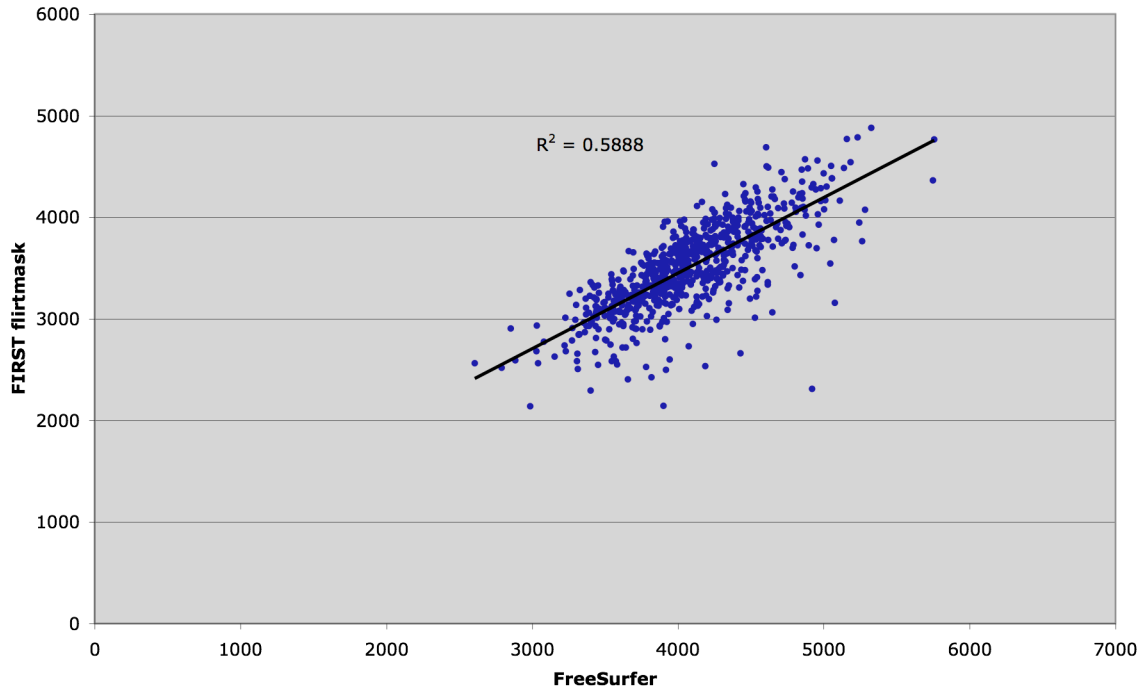
		<b>L_Hipp</b>	<b>R_Hipp</b>
<b>FS vs. FIRST def</b>	<i>PEARSON</i>	0.6867	0.7041
	<i>R^2</i>	0.4715	0.4958
<b>FS vs. FIRST fcd</b>	<i>PEARSON</i>	0.7505	0.7552
	<i>R^2</i>	0.5633	0.5704
<b>FIRST def vs. FIRST fcd</b>	<i>PEARSON</i>	0.8855	0.8811
	<i>R^2</i>	0.7841	0.7763
<b>FS vs. FIRST flirtmask</b>	<i>PEARSON</i>	0.7673	0.7655
	<i>R^2</i>	0.5888	0.586
<b>FIRST def vs. FIRST flirtmask</b>	<i>PEARSON</i>	0.825	0.8458
	<i>R^2</i>	0.6806	0.7153

**FIRST def:** Using the default number of modes of variation: Caudate and Hippocampus: 30; Thalamus, Putamen and Pallidum: 40; Amygdala and Accumbens: 50.

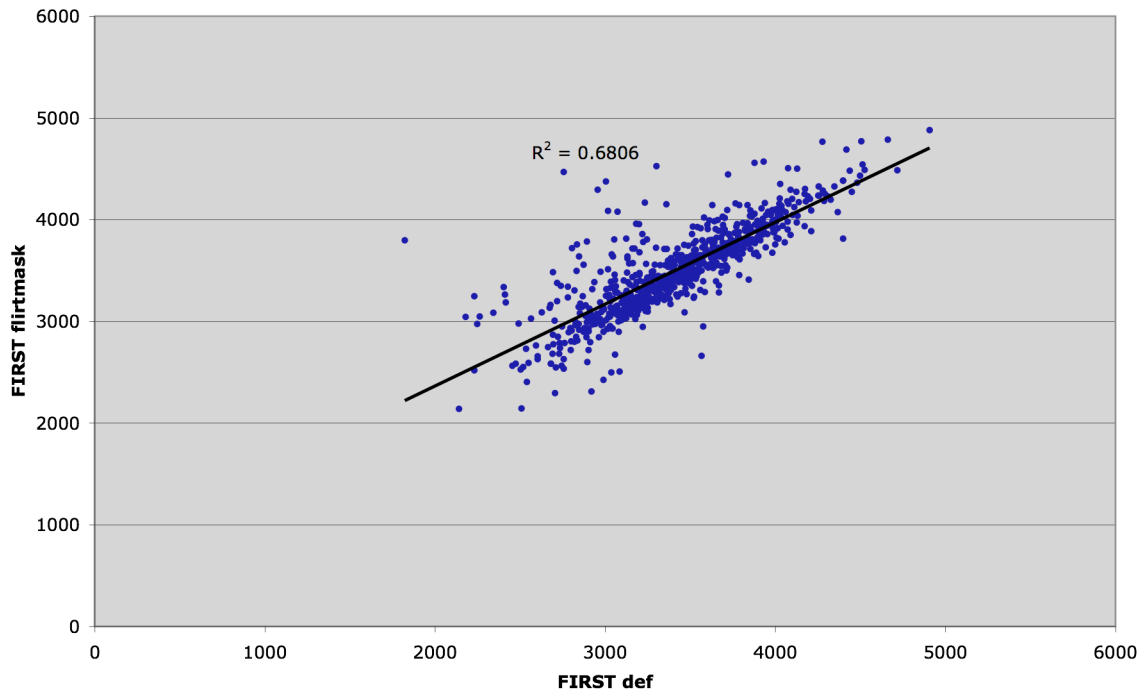
**FIRST fcd:** Using the following number of modes of variation: Thalamus: 150; Caudate: 200; Putamen, Pallidum, Hippocampus, Amygdala and Accumbens: 300.

**FIRST flirtmask:** Same modes of variation as **FIRST def**, but using a mask to select the subcortical structures for the linear alignment.

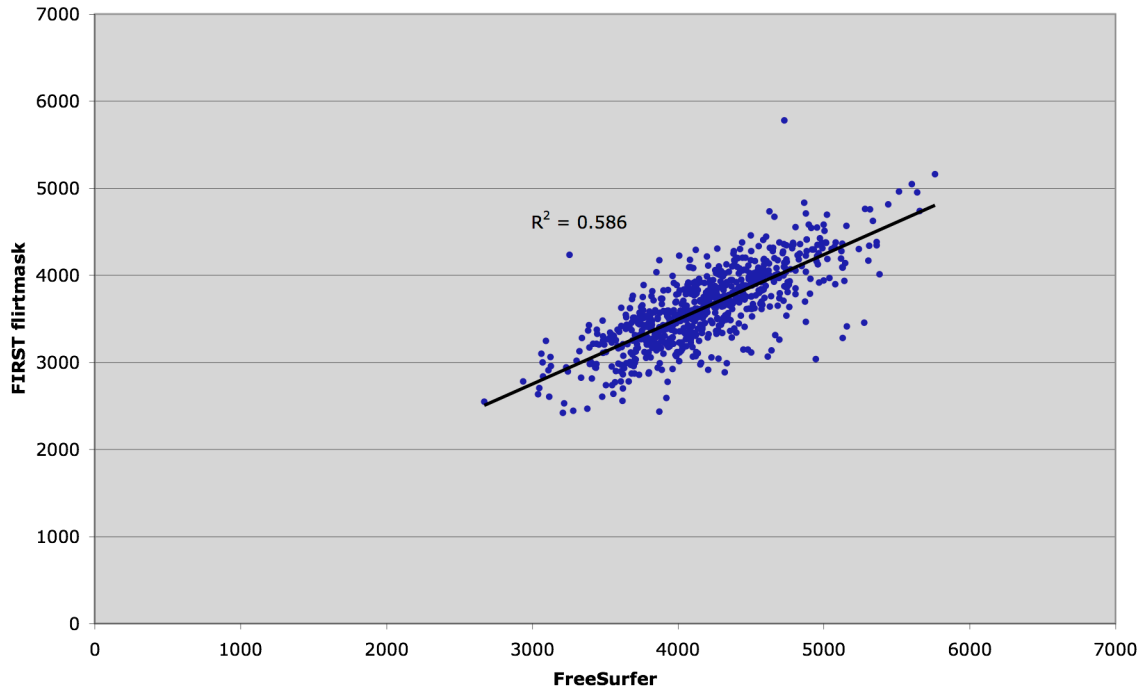
**L\_Hipp**



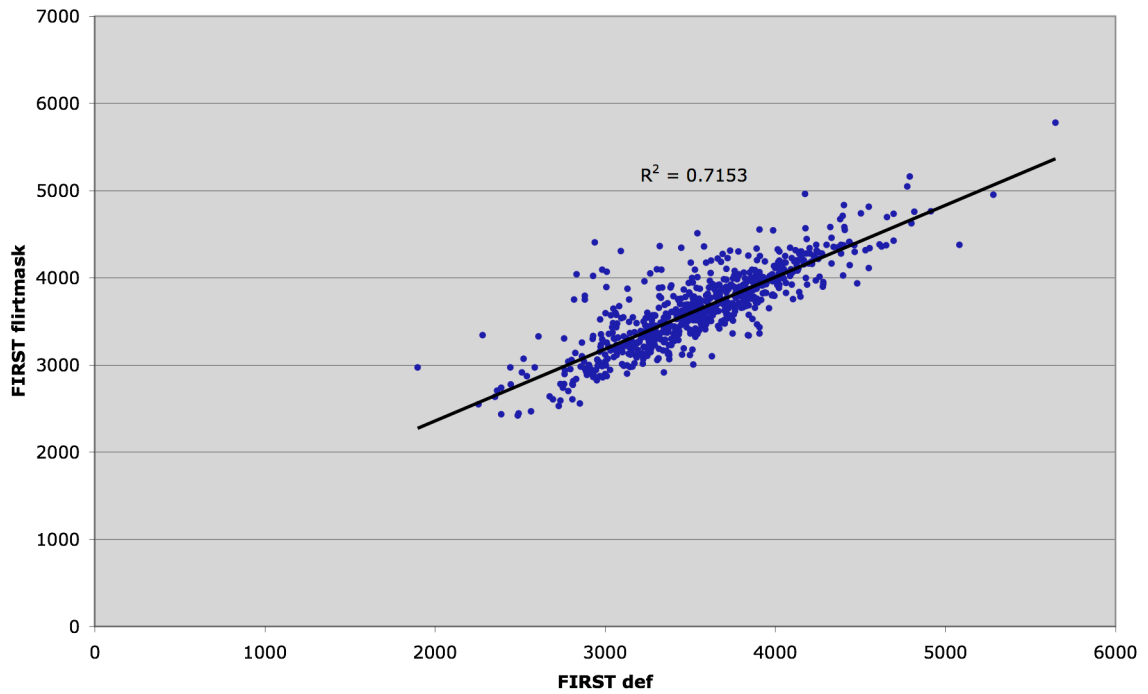
**L\_Hipp**



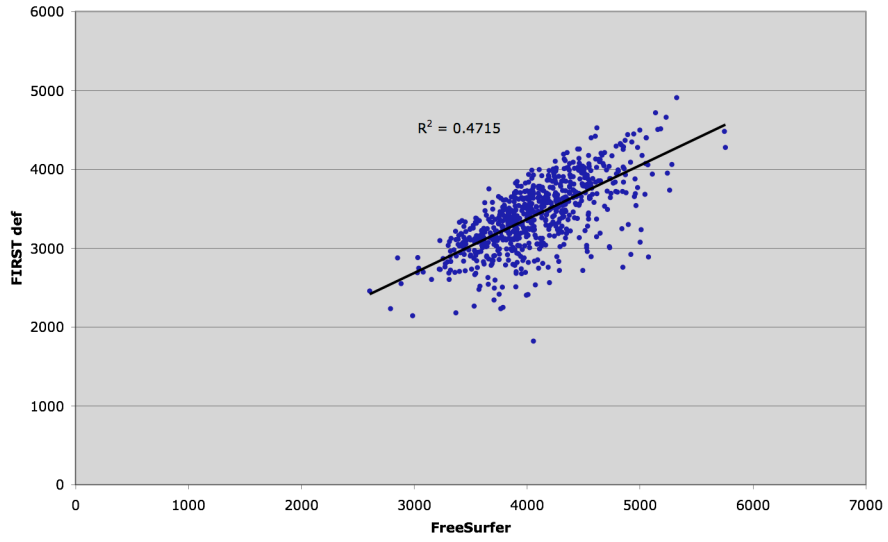
**R\_Hipp**



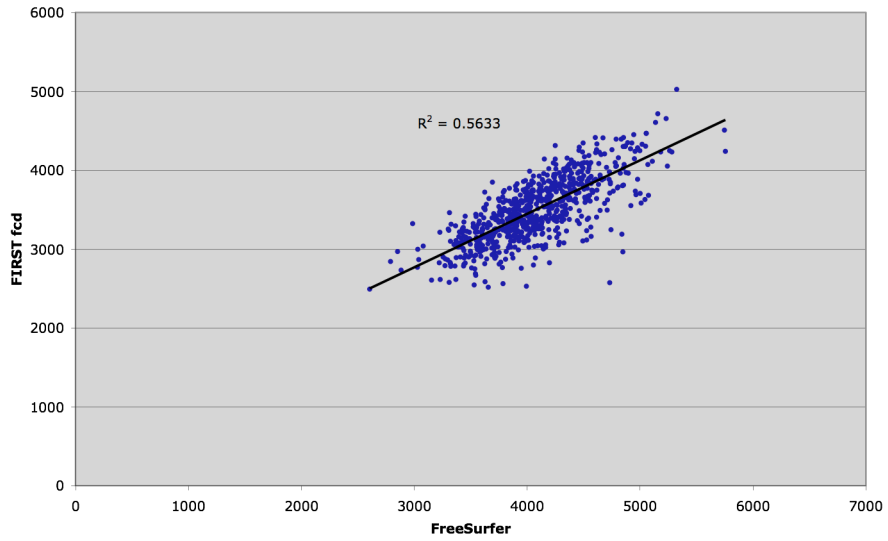
**R\_Hipp**



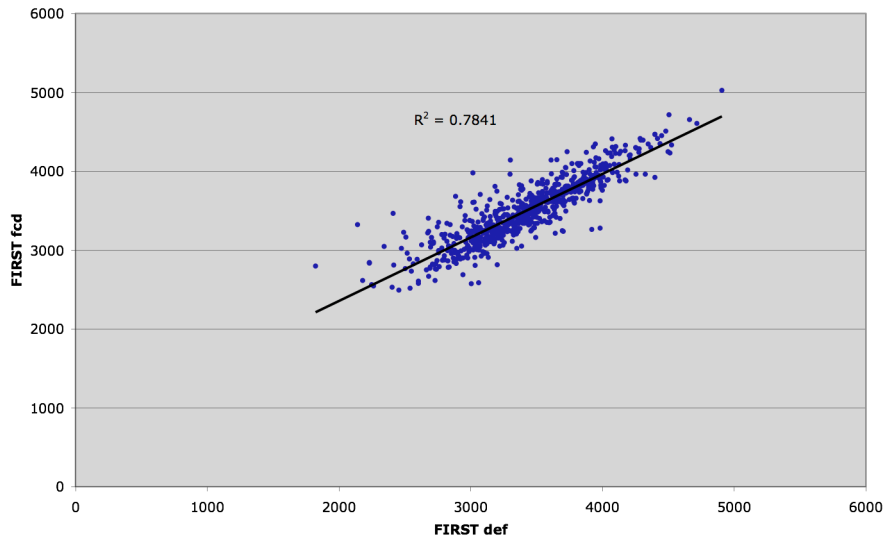
L\_Hipp



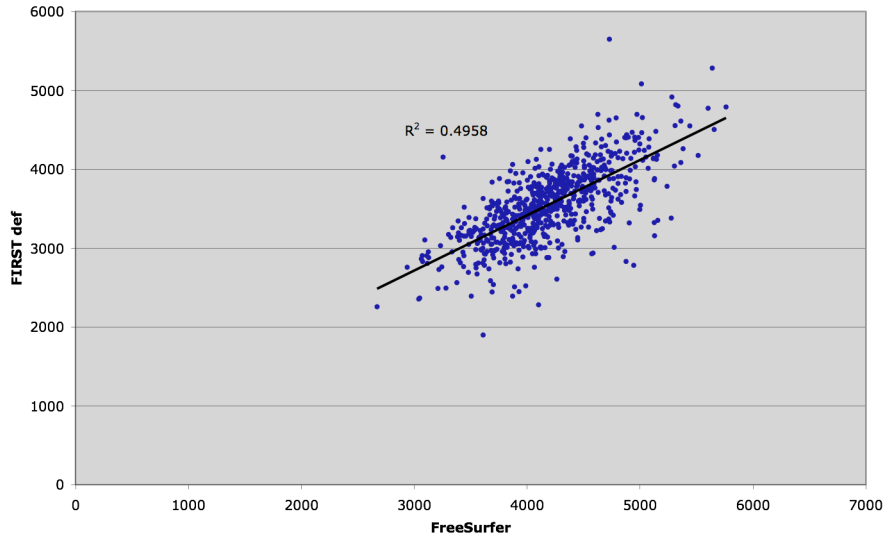
L\_Hipp



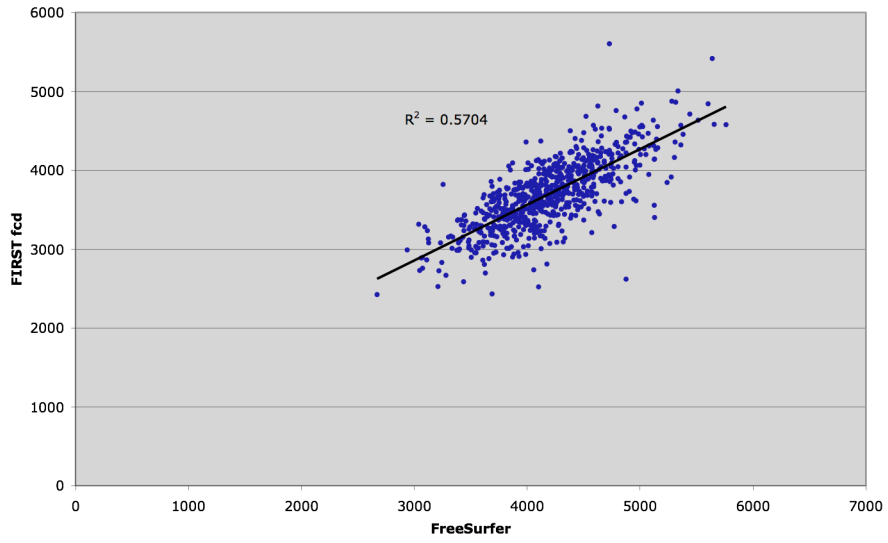
L\_Hipp



**R\_Hipp**



**R\_Hipp**



**R\_Hipp**

